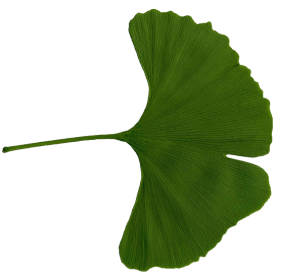


GINKGO TREE

Ginkgo biloba
Asia

**COMMON LIME**

Tilia cordata
British Isles

**WEeping WILLOW**

Salix babylonica
British Isles

**BLACK WALNUT**

Juglans nigra
America

**GOLDEN WEEPING WILLOW**

Salix chrysocoma
British Isles

**WINGNUT TREE**

*Pterocarya
Franxinifolia*
North East Europe
& Middle East

**PURPLE-LEAVED PLUM**

Prunus pissardii
Europe Asia

**HORSE CHESTNUT**

*Aesculus
hippocastanum*
Central Europe

**LOMBARDY POPLAR**

Populus nigra 'italica'
South East Europe &
Middle East

**HOLLY**

Ilex aquifolium
British Isles

**PERSIAN IRONWOOD**

Parrotia persica
Iran

**WHITEBEAM**

Sorbus aria
British Isles

**HAWTHORN**

*Crataegus
monogyna*
British Isles

**SWEET CHESTNUT**

Castanea sativa
Southern Europe

**SILVER BIRCH**

Betula pendula
North Europe

**EVERGREEN OAK**

Quercus ilex
Europe

**COMMON PEAR**

Pyrus communis
Europe

**CEDAR**

Cedrus deodara
Asia

**ENGLISH OAK**

Quercus robur
British Isles

**FLOWERING CHERRY**

Prunus 'kanian'
Japan

**COMMON BEECH**

Fagus sylvatica
British Isles

**HORNBEAM**

Carpinus betulus
Southern England

**CORSICAN PINE**

*Pinus nigra
maritima*
Southern Europe

**HONEY LOCUST**

*Glenditsia
triacanthos*
North Europe

**SYCAMORE**

*Acer
pseudoplatanus*
Central Europe

**WELLINGTONIA**

*Sequoiadendron
giganteum*
North America

**PURPLE BEECH**

*Fagus sylvatica
purpurea*
Europe

**LONDON PLANE**

*Platanus x
hispanica*
America & Asia

**YEW**

Taxus baccata
British Isles

**ASH**

Franxinus excelsior
Britain & North
Europe



LINCOLN

ARBORETUM

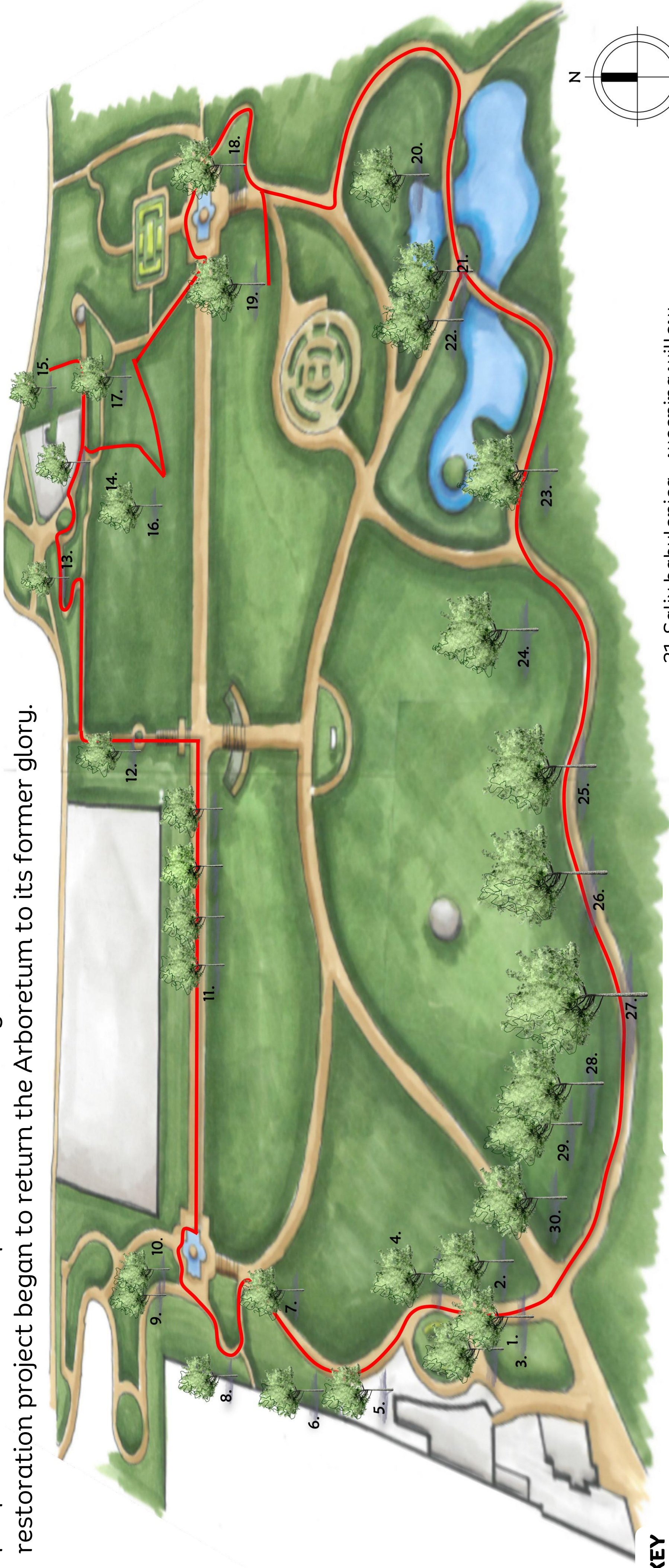
TREE TRAIL



CITY OF
Lincoln
COUNCIL

LINCOLN ARBORETUM TREE TRAIL MAP

The Lincoln Arboretum was designed and laid out in 1870 by Edward Milner, and opened in 1872. A bandstand was added to the site in 1884, and during the 1890s the Arboretum attracted over 40,000 people to concerts. The space was much neglected after World War 2. In 2003 a £3 million restoration project began to return the Arboretum to its former glory.



KEY

- | | |
|--|--|
| 1. Ginkgo biloba - ginkgo tree | 11. Tilia cordata - common lime |
| 2. Juglans nigra - black walnut | 12. Salix chrysocoma - golden weeping willow |
| 3. Prunus pissardii - purple-leaved plum | 13. Aesculus hippocastanum - horse chestnut |
| 4. Ilex aquifolium - holly | 14. Parrotia persica - persian ironwood |
| 5. Crataegus monogyna - hawthorn | 15. Castania sativa - sweet chestnut |
| 6. Quercus ilex - evergreen oak | 16. Pyrus communis - common pear |
| 7. Quercus robur - english oak | 17. Prunus 'kanzan' - flowering cherry |
| 8. Carpinus betulus - hornbeam | 18. Pinus nigra maritima - corsican pine |
| 9. Acer pseudoplatanus - sycamore | 19. Sequoiadendron giganteum - wellingtonia |
| 10. Taxus baccata - yew | 20. Fraxinus excelsior - ash |

- | |
|---|
| 21. Salix babylonica - weeping willow |
| 22. Pterocarya fraxinifolia - wingnut tree |
| 23. Populus nigra 'italica' - lombardy poplar |
| 24. Sorbus aria - whitebeam |
| 25. Betula pendula - silver birch |
| 26. Cedrus deodara - cedar |
| 27. Fagus sylvatica - common beech |
| 28. Gleditsia tricanthos - honey locust |
| 29. Fagus sylvatica purpurea - purple beech |
| 30. Platanus x hispanica - London plane |

This tree trail is funded by the Arboretum Advisory Group and is designed to celebrate the diversity of trees within the area.