

WARM WELCOME SPACES: LINCOLN NORTH



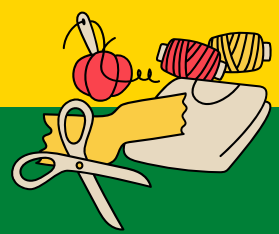
Dec 2023- Mar 2024

WHAT IS A WARM WELCOME SPACE?

These are community spaces which provide a warm welcome throughout the winter.

They may provide activities and refreshments or space for activities to be pursued.

They are always great spaces for a good chat.



OUR LADY OF LINCOLN

Church Lounge, open every Monday 10am-2pm LN2 2HE

ST GILES PARISH CHURCH

Open Mon 2-4pm. Offering free Wi-Fi, hot drinks and other refreshments. Jubilee Halls, Lamb Gardens, Lincoln LN2 4EH www.stgileslincoln.co.uk



VINE COMMUNITY CHURCH

Open Wed 1-3pm, Thurs 9:30am-12:30pm/2:30-4:30pm, Sat 10am-12pm. Find warmth, company and refreshments and on Wednesday afternoon wellbeing activities The Vine Centre (Library), The Parade, Cherry Willingham Lincoln LN3 4JL www.thevinecommunitychurch.org.uk



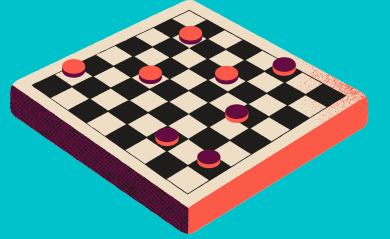
ERMINE LIBRARY COMMUNITY HUB

Open Mon-Thurs, 10am-3pm Offering free Wi-Fi, computer access and free refreshments. 19 Ravendale Drive, Lincoln, LN2 2BT www.bgu.ac.uk,



NETTLEHAM COMMUNITY HUB

Open Mon-Sat, 8:30am-4:30pm, Sun 9am-4pm. Inside is our fantastic library, Seven Districts Coffee and seating for everyone, no matter whether you are a library user or a customer of Seven Districts. There is also free Wi-Fi and public toilets. While you are visiting, pick up one of our what's on guides for everything we have going on inside the hub.



GREEN SYNERGY

Open every Monday/ Wednesday, 10am-12pm; Thursday 1-3pm Food, Hot Drinks and other Refreshments; 49 Roman Pavement, Lincoln LN2 5RD greensynergy.org.uk/



ST GILES METHODIST CHURCH

Coffee Mornings 10am-2pm every Mon/Wed/Fri 54-62 Addison Dr, Lincoln LN2 4LQ lincolnmethodist.org.uk



WARM WELCOME - ST GILES CHURCH (JUBILEE HALLS)

Open Mon/Wed, 2-4pm Offering free Wi-Fi, computer access. Food and Hot drinks

THE WELL AT BAILGATE METHODIST CHURCH

Open Thurs, 9:30am-12pm This is a drop-in centre where all are welcome, and tea and coffee are served.



COMMUNITY WINTER WARMERS

Open Mondays 1-4pm. Free to all and everyone is welcome to join us for a warm meal, drink or just a chill, chat and cake. Sturton by Stow Village Hall Lincolnshire LN1 2AE



Find other warm spaces at www.warmwelcome.uk



WARM WELCOME SPACES: LINCOLN SOUTH



Dec 2023- Mar 2024

WHAT IS A WARM WELCOME SPACE?

These are community spaces which provide a warm welcome throughout the winter.

They may provide activities and refreshments or space for activities to be pursued.

They are always great spaces for a good chat.



LOVE YOUR NEIGHBOUR CAFE

Open Thursdays, 10.30am to 1pm. Free drinks & cakes. Access to table tennis and pool. Lunch - delicious baked potatoes for a small donation. Includes free refreshments, Wi-Fi, games & activities. The Salthouse, Fee School Lane, LN2 1EY



COSY CRAFTERS, BLANKET AND HYGIENE BANK

Open Wed, 11am-1pm. All are welcome. Crafts available or bring your own. Hygiene Bank open Wed, 1pm to 3pm. Hot drinks and juice available, as well as a variety of biscuits (including Free From) during both sessions. Unitarian Chapel, 377 High Street, LN5 7RY



LINCOLN CITY FOUNDATION

Open Mondays 10am-2pm; Warm Wednesdays in church hall, Tea/coffee from 10.00am and hot lunches at noon.

www.lincolncityfoundation.com/warming-up LNER Stadium, LN5 8LD

BOULTHAM BREAKTHROUGH CENTRE

Open Mon/Wed (8am-4pm); Thurs (4-9pm); Sun (9am-12pm) A community hub with a library, community café and space for people to work on laptops. We have free Wi-Fi and our café serves free tea and coffee all the time that it is open. Boultham Park Road, LN6 7ST

BIRCHWOOD BREAKTHROUGH CENTRE

Open Tues/Thurs (8am-4pm); Wed (2-4pm); Sun (9am-12pm). A community hub with a library and community cafe in it. There are several spaces for people to work from and free wifi. Our cafe also serves free tea and coffee all the time.



ST MICHAEL'S, WADDINGTON

Open Mon, 10am-4pm. Space open to all ages with drinks, lunch, activities and good company, High Street, Waddington, LN5 9RF
www.stmichaelschurchwaddington.org



BRANSTON

Branston Home Guard Social Club: Open Thursday, 10am - 12pm, for all age groups. Just pop along for a free hot drink or just a chat, a friendly Members Social Club open to all residents.

Branston Community Library - delighted to offer free hot drinks and a warm space surrounded by books and friendly faces between the hours of 12:30-2:30pm every Saturday.

BRIDGE CENTRAL

Open Mon-Thurs, 10am-2pm. Offering a free community wellbeing cafe - a real home from home - with Wi-Fi, activities throughout the week, free refreshments, soup, toast. Portland Street, LN5 7NN tel 07587 431656



BRIDGE COMMUNITY HUB

Open Mon, Tues, Wed, Fri, 10am-2pm. Foodbank is open 10-12 with CAB drop in Mon/Tues, and the Public Library offers warm space and activities 12-2pm. Newark Road, LN5 8NQ tel. 01522 530730

BRIDGE COMMUNITY VENUE

Open Mon-Thurs, 10am-2pm. Offering a community cafe space with free refreshments, an under 5s soft play area and charity shop. 72a Newark Road, LN5 8PY tel. 01522 530730

ADI'S LEGACY

A pre loved shop with a small community room. Local community pop in for a cuppa and some company. A welcoming, inclusive, accessible space, offering warmth too! Hemswell Avenue, Hartsholme, LN6 0AZ

SALVATION ARMY

Open Wed and Fri, 10am-12:30pm. Providing breakfast, hot meals and hot drinks. 106, High Street, LN5 7PY



BETTER - ONE NK

Open Mon, Wed, Fri 1-3pm. Free Wi-Fi, drinks and other refreshments. Moor Lane, North Hykeham, LN6 9AX
www.better.org.uk/helathy-communities/warm-spaces



Find other warm spaces at www.warmwelcome.uk