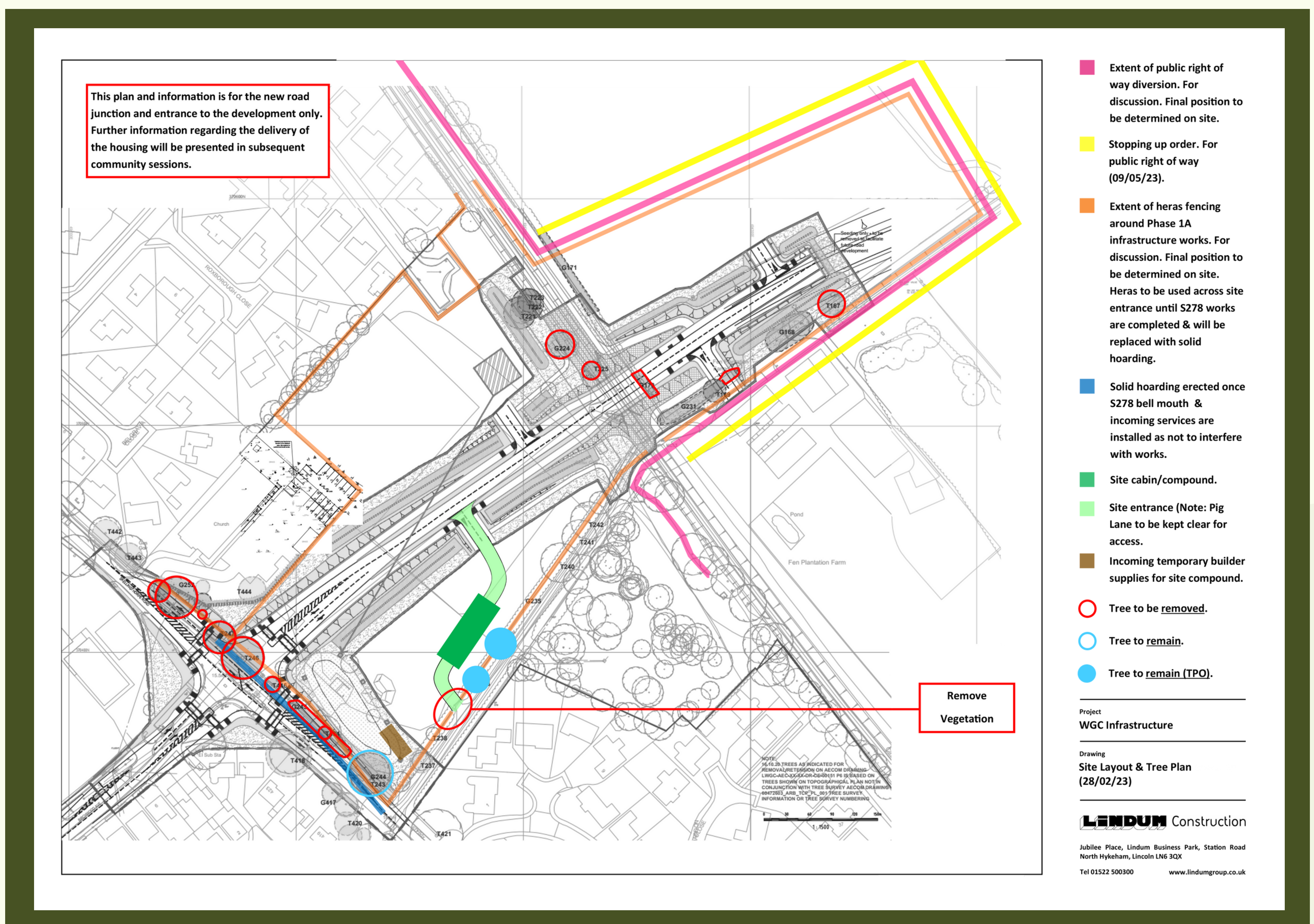


Skellingthorpe Road Southern Access Traffic Management: A phased plan

Western Growth Corridor

During the construction works along Skellingthorpe Road/Birchwood Avenue, which will form the new southern access into the Western Growth Corridor site, there will be a phased traffic management plan in place. This is to ensure there is clear directional signage and traffic management to keep the traffic moving during the works as well as safeguarding people working on the highway and all road users (cars/cyclists and pedestrians).



While there will be some diversions in place during the works, which have been agreed in conjunction with the local highways authority, these diversions have been designed to minimise disruption to the road network and keep the traffic flowing.

All traffic management will be closely monitored and changes or additional measures may be put in place if required.

Skellingthorpe Road Southern Access Traffic Management:

Timeline

Western Growth Corridor

Works will last for about a year with approximate timings set out below:

Phase 1 and 2: 19 weeks

- Removal of existing traffic signals/Island.
- Install two 'Narrow Lanes' of traffic.
- Remove right turn lane from Skellingthorpe Road to Birchwood Avenue. Divert via U-turn at Rookery Lane Roundabout. (4.7km total diversion)
- Allow traffic to turn left from Skellingthorpe Road to Birchwood Avenue.
- Birchwood Avenue as 'Access Only' for residents and businesses, other traffic to be diverted to Skellingthorpe Road via the A1192 (4.7km diversion)
- Pedestrian 'Push Button Crossing' to be installed, pedestrians to be diverted from the North footway via the existing crossing on Birchwood Avenue using the two cut through footways.

Phase 4: 7 weeks

- Traffic on Skellingthorpe Road to be run as two narrow lanes.
- No access from Birchwood Avenue to Skellingthorpe Road, diversion via the A1192 (4.7km).
- Pedestrians will be able to use the newly constructed North footway, West footway and will have a temporary route permitted on the East side (details to follow).
- The Southbound Lane on Birchwood Avenue will be closed and occupied as a work area with 'Access Only' for residents.

Phase 6: 4 weeks

- Two way traffic signals are to be installed with a single lane running.

Phase 7a : 2 weeks

- Full closure and diversion is required for a period of night working to deliver the final surface course and white lining to the new junction.
- An appropriate proposal on a diversion route is to be put forward and assessed later in the works.

Phase 3: 4 weeks

- Two way traffic signals are to be installed with a single lane
- Diversions as part of Phase 2 still in place.

Phase 5: 2 weeks

- Traffic to run as two lanes.
- Left turn from Skellingthorpe Road to Birchwood Avenue allowed
- Left turn from Birchwood Avenue to Skellingthorpe Road allowed.
- Other traffic diverted using previously detailed routes.
- Various lane restrictions will be required with a degree of flexibility.

Phase 7: 4 weeks

- Traffic to run as two lanes.
- Left turn from Skellingthorpe Road to Birchwood Avenue allowed
- Left turn from Birchwood Avenue to Skellingthorpe Road allowed.
- Other traffic diverted using previously detailed routes.
- Various lane restrictions will be required with a degree of flexibility.

There will then be a further 2 weeks for snagging/sign off. All timings mentioned above are estimates and subject to change.

Traffic Management:

Access and diversions

Western Growth Corridor

Access into the petrol station and Spar shop on Birchwood Avenue will be maintained.

The Church of Jesus Christ of Latter-day Saints will also be accessible throughout the works.

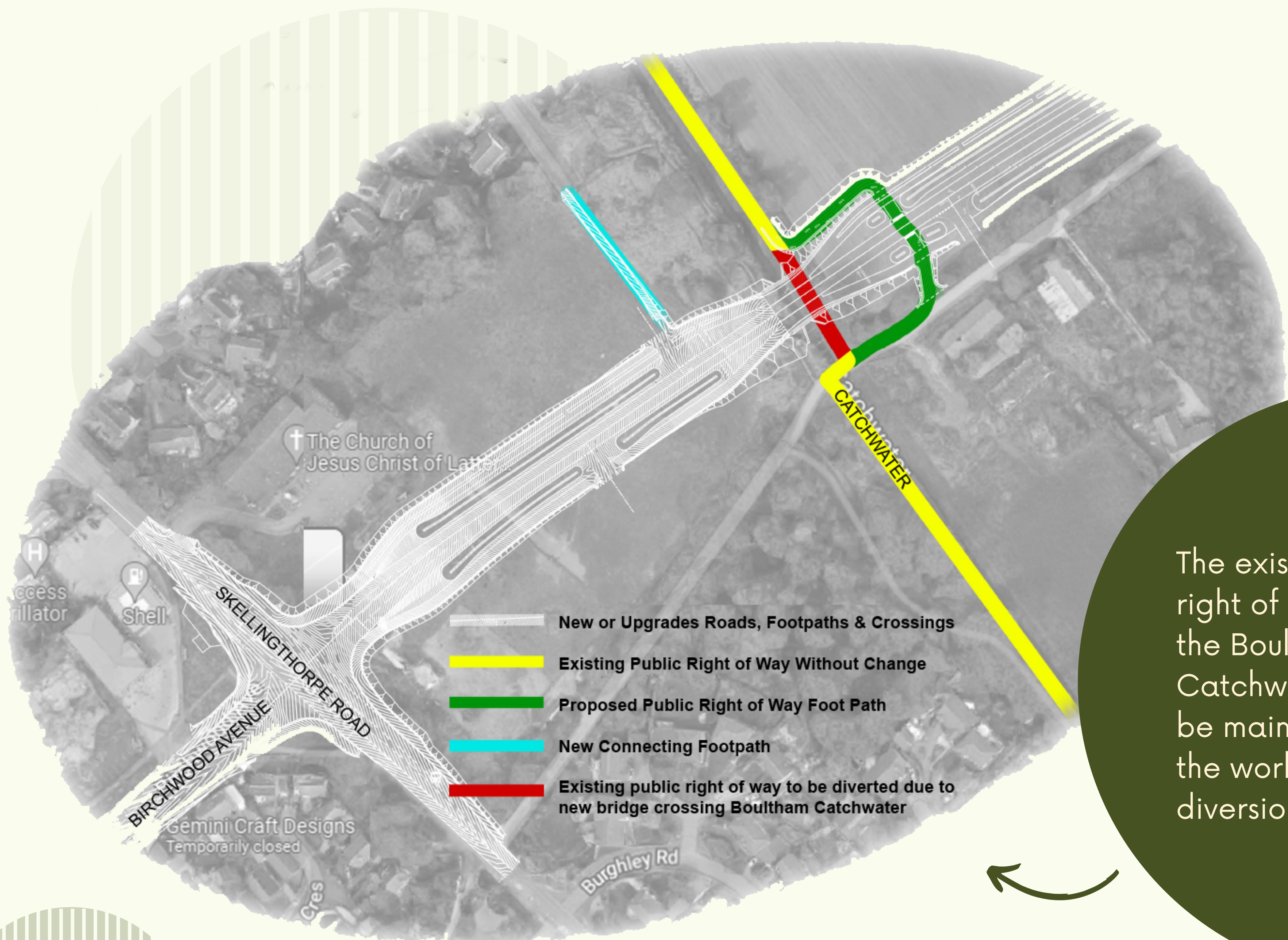
Bus services and diversions

Throughout the works bus services into the city will continue to operate. Details of bus diversion routes will be available prior to works beginning.

We are currently working with Stagecoach to determine diversion routes to ensure the least amount of disruption possible.



Skellingthorpe Road access and footpath plans

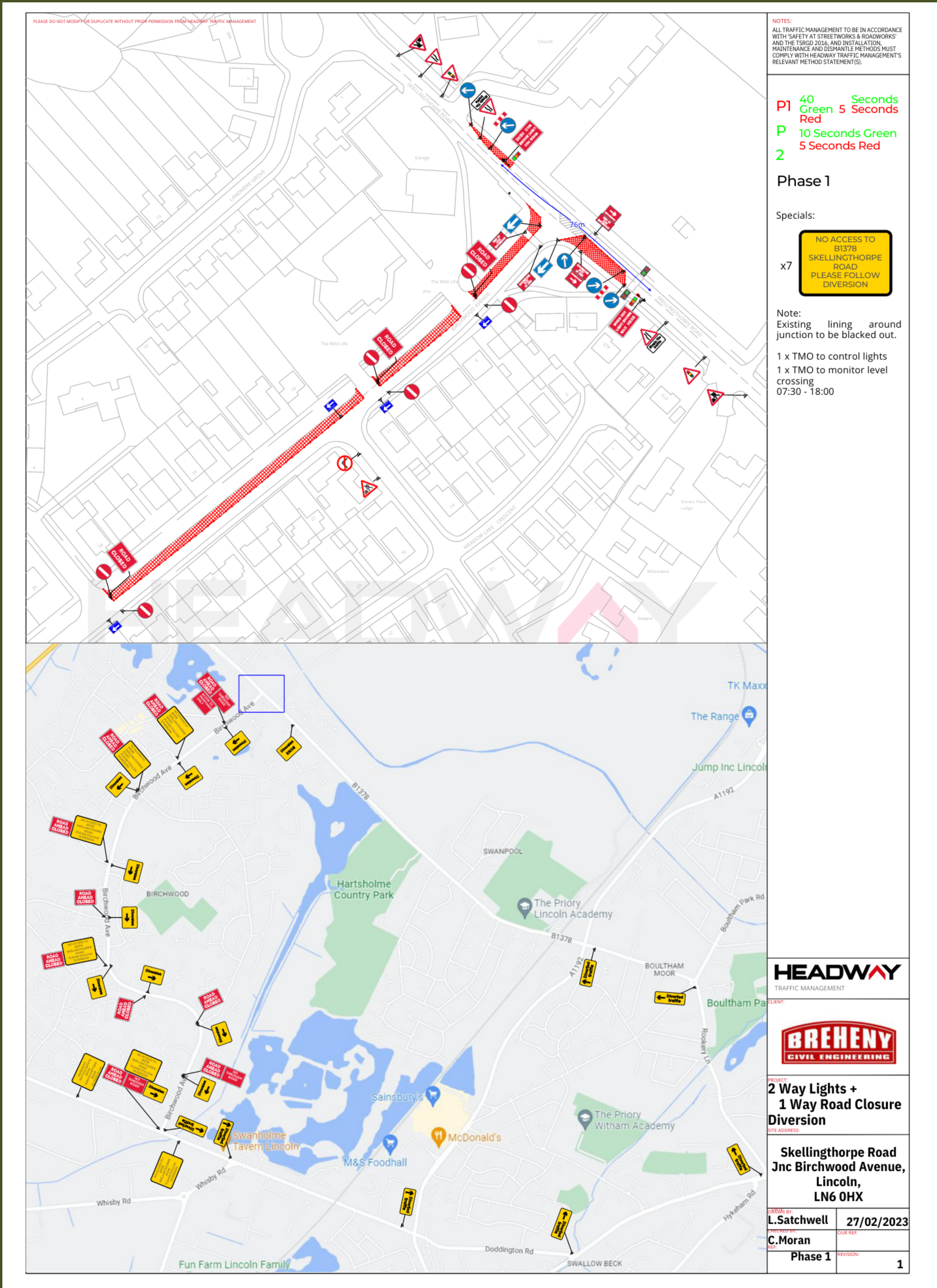


The existing public right of way along the Boultham Catchwater Drain will be maintained during the works, with diversions in place.

Traffic Management:

Access and diversions: Phase 1

Western Growth Corridor



Supporting the Community: About Lindum

—*—
Western Growth Corridor



Who is Lindum and what do we do?

Lindum is a regional construction company based in Lincoln with offices in Peterborough and York.

We are an employee and family-owned business employing 600 people, around half of whom are tradespeople. As a good employer, we regularly appear in the top 100 of the Sunday Times 'Best Companies to Work For' award.

Our work includes managing new build projects, such as homes, extensions for schools and hospitals, and new factories or industrial units. We also deliver refurbishment projects, including heritage schemes. Lindum also has a maintenance team and a Waste Recycling Centre – you may have seen our vans and skip lorries locally.

How do we work in the community?

We are committed to giving something back and leaving a legacy where we work. Our aim is to add value to our environment, look after the wellbeing of our employees, help young people who might be interested in construction as a career, and support the local community and businesses.

Local residents and schools can come to our sites to see work progressing, and we visit schools and colleges to talk about our projects and careers in construction.

There are a range of ways we can make an impact in the local community when we deliver a construction project, for example, by:

- Employing local people
- Using local businesses, as sub-contractors or suppliers for materials
- Employing apprentices or offering work experience
- Supporting community initiatives
- Engaging with schools or colleges
- Improving the environment



Supporting the Community:

Our ideas



Western Growth Corridor

Opportunities for college students

Lindum delivered a world-class cinema and leisure experience for Doncaster Council and Savoy Cinemas. During the project, we worked with Doncaster College to identify opportunities for their students to benefit from the scheme.

Bricklaying students gained work experience on site and we visited the College to give careers talks. We invited students to our Business Park in Lincoln to film different trades and they produced a 'Day in the Life' video to promote construction as a career.

Using labour and materials local to Doncaster was important to the council so we held an event to meet local companies who might be interested in working with us on the project.

Lessons for recycling

As part of a school building project, Lindum worked with teachers to give children lessons in recycling and sustainability. They were taught about the impact of single-use materials and how to reduce the amount of waste sent to landfill.

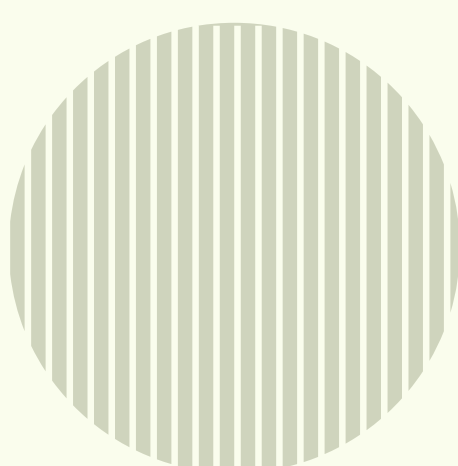
We donated six new playground bins together with purpose-built stores made from recycled wood. This supported the school's efforts to recycle more rubbish by having clearly defined sections for different types of waste.

Trees donated for Great Big Green Week

Lindum donated apple trees to eight Lincolnshire schools as part of a campaign highlighting the need for urgent action on climate change.

We recognise the impact construction has on the UK's journey towards a sustainable future and we're committed to being a net zero carbon company by 2031.

The tree planting idea came out of a meeting of our company's Sustainability Group.



Together, let's deliver
Lincoln's ambitious future



Supporting the Community: Your thoughts



Western Growth Corridor

What would you like to see Lindum do to support the community and leave a legacy on this development?

Place a sticky dot in the box below to show your preference or a post-it note to give us your ideas.

Support schools/colleges and young people

We could, for example:

- Visit local schools/colleges to talk about the development and offer site visits to see work progressing.
- Give talks in schools/colleges about careers in construction.
- Explore apprenticeship or university placement opportunities.

Support the economy of the area

We could, for example:

- Advertise job opportunities locally.
- Employ local people on the project.
- Work with local businesses on the project and use local suppliers for materials.

Tackle disadvantage in the community

We could, for example:

- Support food poverty initiatives.
- Provide community access to digital learning courses.
- Promote opportunities to improve wellbeing and mental/physical health.
- Volunteer our time and resources with community projects.

Improve the environment

We could, for example:

- Explore local opportunities for tree planting, encouraging wildlife or improving biodiversity.
- Volunteer our time and resources to improve local footpaths or cycleways.



Building homes:

Design and concept

Western Growth Corridor

Key factors we are taking into consideration

Placemaking and identity

Nod to Lincoln's original garden village - Swanpool

Creating attractive homes

Aspects in to and from the development

Scale and Key Elevations

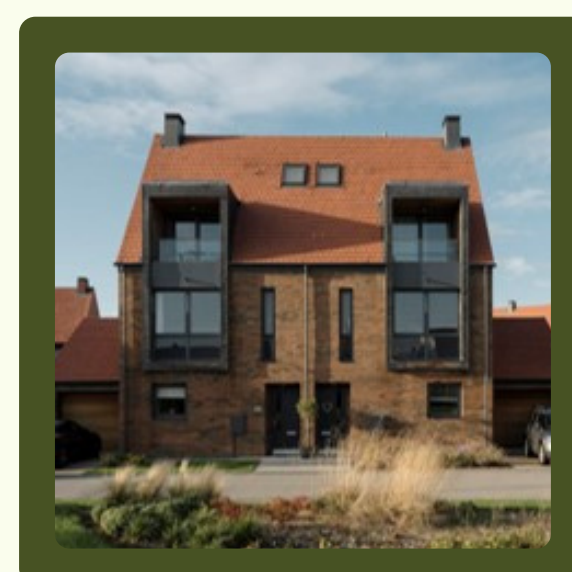
Sustainable Homes

Mix of homes for all

Community and Green Spaces

Site Features:

- New homes will face towards the public realm, roads and footways to provide natural surveillance
- Splayed corner homes in keeping with the 'Garden Village' tradition as displayed at nearby Almond Avenue
- Areas of attractive public open space with mature trees retained where this is possible
- Dedicated car parking with landscaping and tree planting
- New ponds to provide for drainage and ecological benefits
- New bridge to be designed as a focal structure acting as a gateway into the main development site - a place of pause and reflection with views along the existing watercourse



Building homes:

Key features

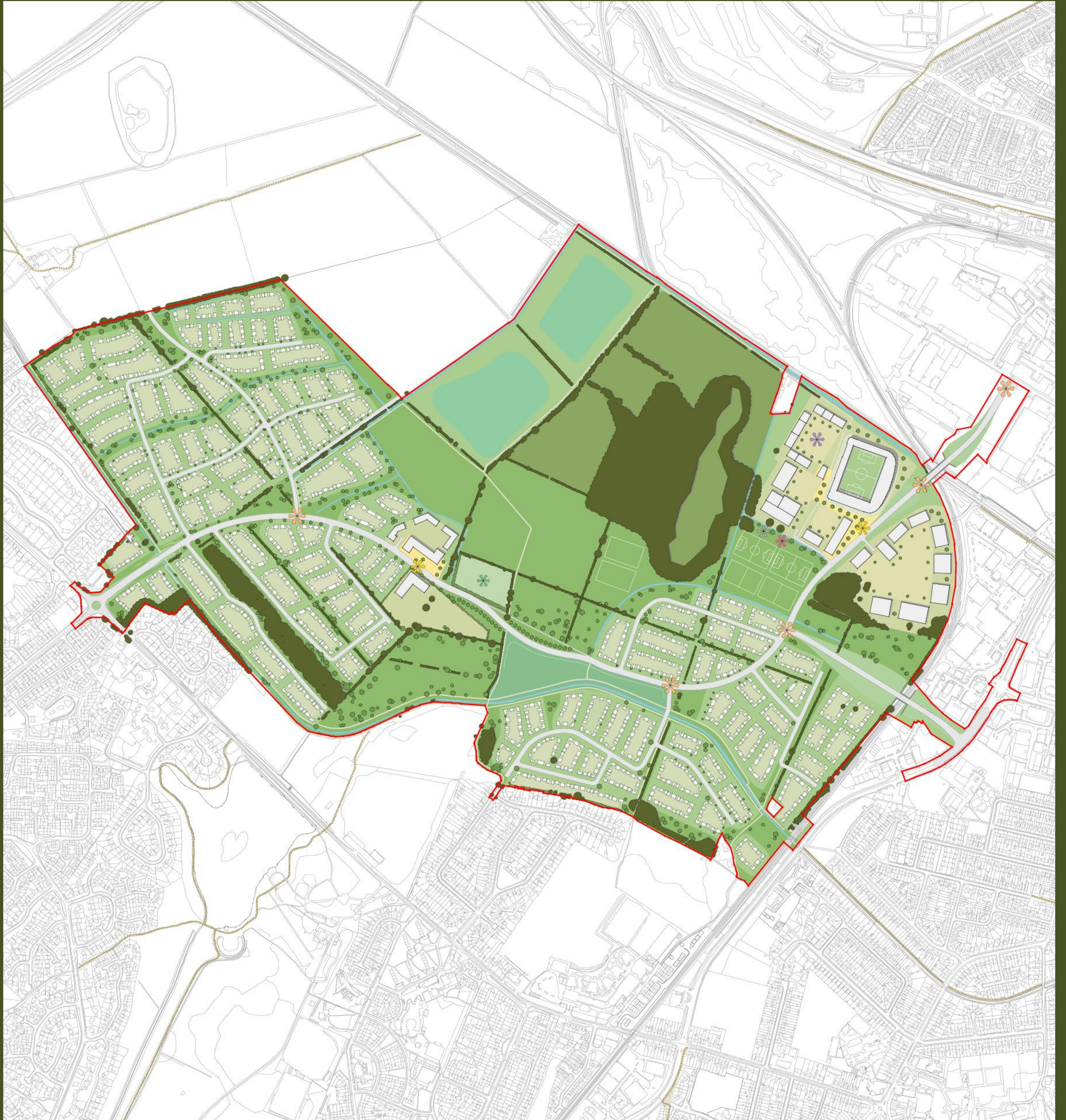
Western Growth Corridor



Creating a community

Our plan

Western Growth Corridor



Building a future: Sustainability

Western Growth Corridor

The homes will be designed with sustainability very much in mind.

We aim to:

- Build highly insulated homes to reduce heat loss including triple glazing
- Benefit from solar gain
- Controlled air leakage & ventilation
- Lower heat requirement met by Air Source Heat Pump rather than gas boiler
- Integrate Smart Meters & Controls to heating & hot water systems
- Not use gas
- Meet electric demand as far as possible by Solar PV to each home & renewable from the grid
- Use low energy lighting, LEDs
- Use low energy & low water use appliances
- Provide Electric Vehicle Charging

Homes in this area will look and perform differently to most new build properties, leading the way for the future of sustainable living.

