

WARM WELCOME SPACES: LINCOLN NORTH

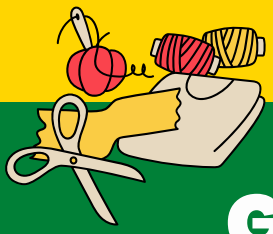


WHAT IS A WARM WELCOME SPACE?

These are community spaces which provide a warm welcome throughout the winter.

They may provide activities and refreshments or space for activities to be pursued.

They are always great spaces for a good chat.



GREEN SYNERGY

Open every Wednesday, 10am-12pm
49 Roman Pavement, Lincoln LN2 5RD
greensynergy.org.uk/

ST GILES PARISH CHURCH

Open Mon 2-4pm. Offering free Wi-Fi, hot drinks and other refreshments. Jubilee Halls, Lamb Gardens, Lincoln LN2 4EH www.stgileslincoln.co.uk

VINE COMMUNITY CHURCH

Open Wed 1-3pm, Thurs 9:30am-4:30pm, Sat 10am-12pm.

The Vine Centre (Library),
The Parade, Cherry Willingham Lincoln LN3 4JL
www.thevinecommunitychurch.org.uk



DUNHOLME COSY CORNER

Open Mon and Wed, 10am-3pm. We have a good selection of games and toys available.

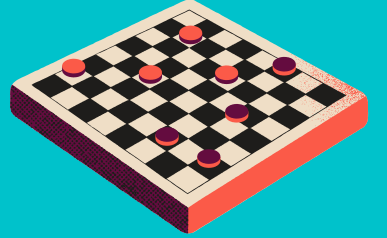
Jubilee Room, Dunholme Village Hall,
Honeyholes Lane, LN2 3SU
www.dunholme-pc.gov.uk



NETTLEHAM COMMUNITY HUB

Open Mon-Sat, 8:30am-4:30pm, Sun 8:30am-4pm. We cater for the whole community, aiming to prevent loneliness and isolation and create community cohesion by providing a safe space for the community as well as hosting events throughout the year.

Free Wi-Fi & Parking



BAILGATE METHODIST CHURCH

Open Thurs 9:30am-12pm, Fri (fortnightly) 10:30am-1pm and Sun 10am-12pm, providing hot drinks and other refreshments.

Bailgate, LN1 3AR

LINCOLN CATHEDRAL

Open every 3rd Saturday of each month, 9am-12pm

ST GILES METHODIST CHURCH

Open Mondays 10am-12pm (Crafting session)

Wed and Fri 10am-12pm

54-62 Addison Dr, Lincoln LN2 4LQ

lincolnmethodist.org.uk



ERMINE LIBRARY AND COMMUNITY HUB

Open Tues 9am-4pm and Wed 9am -1pm.

Offering free Wi-Fi, computer access and hot drinks.

19 Ravendale Drive, Lincoln, LN2 2BT

www.bgu.ac.uk,

OUR LADY OF LINCOLN PARISH CHURCH

Open Mon 10am -2pm.

Laughton Way, Lincoln, LN2 2HE

www.ourladyoflincoln.com

WELTON AND DISTRICT CRAFT CLASS

Open Mon 9am-12pm. Offering a a craft class for adults.

Welton Village Hall, Ryland Road, Welton, LN2 3LU



Find other warm spaces at www.warmwelcome.uk



WARM WELCOME SPACES: LINCOLN SOUTH



WHAT IS A WARM WELCOME SPACE?

These are community spaces which provide a warm welcome throughout the winter.

They may provide activities and refreshments or space for activities to be pursued.

They are always great spaces for a good chat.



ST SWITHIN'S (THE SALTHOUSE)

Parent and Toddlers, 10:15am-12pm on Mondays and the Love Your Neighbour Café - tea, coffee and cakes. Every Thursday, 10:30am-12:15pm. Free School Lane, LN2 1EY tel. 01522 275067



THE COLLECTION & USHER GALLERY

Open Mon, Thurs to Sun, 10am-4pm. Offering free Wi-Fi, with food, hot drinks and other refreshments available. LN2 1LP

BRACEBRIDGE HEATH - GRANTHAM ROAD

Open Wed, 9-11:30am. Heath Christian Partnership, Community Drop in at the Methodist Church. Offers activities each week. LN4 2LE

St John the Evangelist Church: Wellbeing Cafe on the last Tuesday of the month, 2-4pm; Community Coffee Morning on the first Saturday of the month, 10am-12pm; Prayer breakfast 2nd Saturday of the month, 8:30-9:30am, LN4 2LD

ST MICHAEL'S, WADDINGTON

Open Mon, 10am-6pm. Offering free refreshments, food and activities in a child friendly space. High Street, Waddington, LN5 9RF www.stmichaelschurchwaddington.org



BRANSTON

Branston Home Guard Social Club: Open Thur, 10.30am - 12pm, for all age groups. Just pop along for a free hot drink or just a chat, a friendly Members Social Club open to all residents.

Branston Community Group (Good Neighbour Scheme): 1st & 3rd Friday every month. All welcome. Offering refreshments, chat, games, puzzles or simply a sit and relax in a warm friendly space.

BRIDGE CENTRAL

Open Mon-Thurs, 10am-2pm. Offering a free community wellbeing cafe - a real home from home - with Wi-Fi, activities throughout the week, free refreshments, soup, toast. Portland Street, LN5 7NN tel 07587 431656



BRIDGE COMMUNITY HUB

Open Mon, Tues, Wed, Fri, 10am-2pm. Foodbank is open 10-12 and the Public Library offers warm space and activities 12-2pm. Includes baking club on Tuesdays, board games/organ recital on a Friday, Other activities to follow. Newark Road, LN5 8NQ tel. 01522 530730

BRIDGE COMMUNITY VENUE

Open Mon-Thurs, 10am-2pm. Offering a community cafe space with free refreshments, an under 5s soft play area and charity shop. 72a Newark Road, LN5 8PY tel. 01522 530730

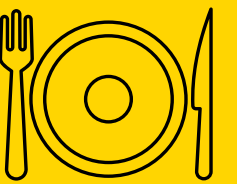


LINCOLN CITY FOUNDATION

Open Mondays, 10am-3pm. A free to access communal space within the LNER Stadium, Lincoln city Football Club. Open to local people to access. LNER Stadium, LN5 8LD

SALVATION ARMY

Open Wed and Fri, 10am-12:30pm. Providing breakfast, hot meals and hot drinks. 106, High Street, LN5 7PY



LINCOLN CENTRAL LIBRARY

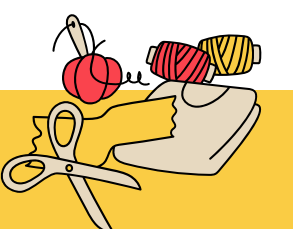
Open Mon to Sat, 9am-5pm (Thurs 9-6; Sat 9-4). Offering free Wi-Fi, computer access. Thursdays: free cuppa 10:30-11:30. Free School Lane

WASHINGBOROUGH

St John's Church: Open Wed/Fri, 9am-12pm.; Sat 2-4pm & Sun, 10am-12pm. Offering Wi-Fi, hot drinks in a child friendly space. LN4 1AZ www.washingbroughgroup.org

Washingborough Parish Council:

Open every other Thursday. Offering a warm space, comfy chair & hot drinks. Games available for all ages or just come for a chat. Civic Office, Fen Road, LN4 1AB



BETTER - ONE NK

Open Mon, Wed, Fri 1-3pm. Free Wi-Fi, drinks and other refreshments. Moor Lane, North Hykeham, LN6 9AX www.better.org.uk/helathy-communities/warm-spaces



Find other warm spaces at www.warmwelcome.uk